

PELLIZZONI

PPFV

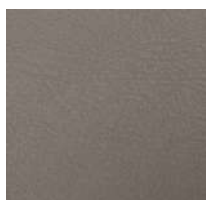
vintage leather
pelle vintage

st
la
a
i
t
a
m

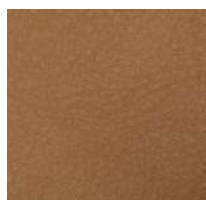
PELLIZZONI

PPFV

vintage leather
pelle vintage



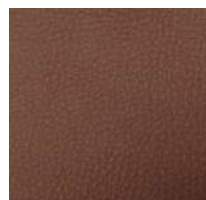
09 ARGILLA



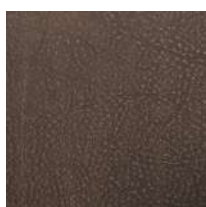
07 NATURALE



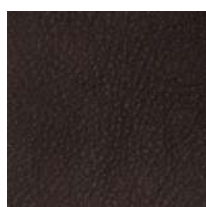
10 TAUPE



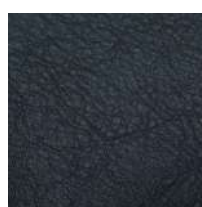
01 BULGARO



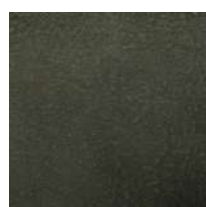
02 TERRA



03 CHOCO



12 NOTTE



08 OLIVA

PPFV

vintage leather pelle vintage

Top-grain leather, aniline dyed. The final wax finishing is partly abraded to grant color nuances with a "vintage" effect.

Thickness: 1,3-1,5 mm

Medium size: ≤ 4,70 mq

Tannage: chrome tanning

Dyeing: aniline dyed

Finish: waxes

Pelle fiore corretto, tinta all'anilina, la rifinitura a base di cera viene abrasa per conferire sfumature di colore ad effetto usurato.

Spessore: 1,3-1,5 mm

Misura media: ≤ 4,70 mq

Concia: al cromo

Tintura: all'anilina

Rifinitura: prodotti cerosi