

PELLIZZONI

Metal

metal finishes

finiture metallo

PELLIZZONI

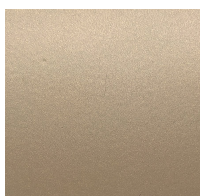
METAL FINISHES

painted finishes

finiture verniciate



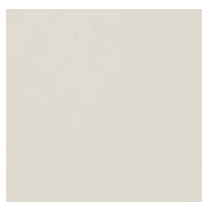
CH CHAMPAGNE
CHAMPAGNE



OR GOLD PAINTED
LACCATO ORO



PG PEARL GREY
GRIGIO PERLA



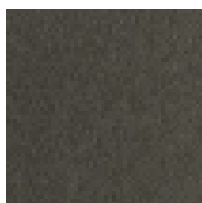
BO MATT WHITE
BIANCO OPACO



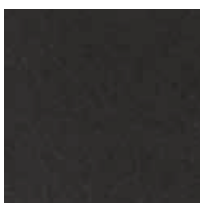
BI GLOSSY WHITE
BIANCO LUCIDO



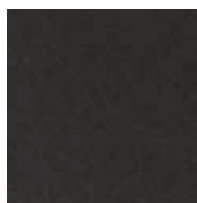
BR BRONZE PAINTED
LACCATO BRONZO



GF GRAPHITE PAINTED
LACCATO GRAFITE



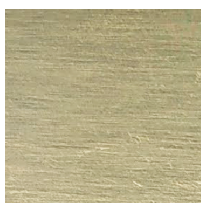
NO MATT BLACK
NERO OPACO



NS SEMIBRIGHT BLACK
NERO SEMILUCIDO

brass finishes

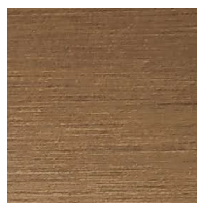
finiture ottone



OL BRIGHT BRASS
OTTONE LUCIDO



OS SATIN BRASS
OTTONE SATINATO



OB BRONZED BRASS
OTTONE BRONZATO

METAL

metal finishes finiture metallo

Powder coating

A thin layer of powder paint is applied on the surface and then thermally fixed.

Satin and bright brass finishes

Obtained through abrasions and transparent protective painting.

Bronze brass finish

Obtained by oxidation and surface brushing. Transparent protective painting.

Verniciatura a polvere

Ottenuta mediante l'applicazione di vernici in polvere poste in cottura a forno.

Satinatura e lucidatura ottone

Ottenute tramite abrasioni e verniciatura trasparente di protezione.

Bronzatura ottone

Ottenuta tramite ossidazione e spazzolatura della superficie. Verniciatura trasparente di protezione.