

Route

Cod. ACC.600.ROU
Design Studio NOVE.3
Production year 2020

Cart with structure in brass. Wheels and trays in wood, edge covered in leather.

Covering finishing available
CPF - Full grain leather (30 colors)
CTT - Contract leather (15 colors)

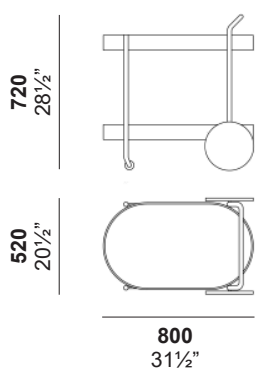
Trays
NC - Walnut Canaletto
FR - Natural ash
FG - Grey ash
FS - Bleached ash
FN - Black ash
PV - Vienna straw

Wheels
NC - Walnut Canaletto
FR - Natural ash
FG - Grey ash
FS - Bleached ash
FN - Black ash

Structure
BI - Glossy white
BO - Matt white
BR - Bronze painted
CH - Champagne
GF - Graphite painted
NO - Matt black
NS - Semi-bright black
OR - Gold painted
PG - Pearl grey




Informazioni tecniche




All measurements in
millimetres and inches

Technical information

 Net weight 27 kg/ 59.4 lb
Gross weight 29 kg/ 63.8 lb

Packaging information

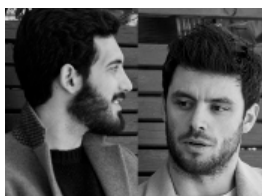
 Dimensions
57 X 85 x 77 cm
22½ x 33½ x 30¼ inches

Type Carton

 Volume 0.373 m³

Design

STUDIO NOVE.3



Luca Giacomelli and Lorenzo Rossotti both born in 1993, graduated in Product Design at the European Institute of Design in Milan in 2015. Since 2015 they have been collaborating with design studios in Milan also working in the field of packaging. In 2018 they founded together Design Studio Nove.3 in Milan, dealing with product design and design consulting. In the meantime, they take part in some contests with the studio, receiving international awards from important companies in the furniture sector.

Route

Cod. ACC.600.ROU
Design Studio NOVE.3
Anno di produzione 2020

Carrello portavivande con struttura in ottone.
Ruote e ripiani in legno, bordi rivestiti in cuoio.

Rivestimenti disponibili
CPF - Cuoio pieno fiore (30 colori)
CTT - Cuoio contract (15 colori)

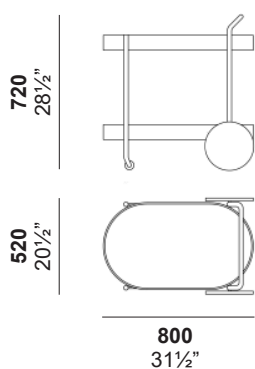
Vassoi
NC - Noce canaletto
FR - Frassino naturale
FG - Frassino grigio
FS - Frassino sbiancato
FN - Frassino nero
PV - Paglia di Vienna

Ruote
NC - Noce canaletto
FR - Frassino naturale
FG - Frassino grigio
FS - Frassino sbiancato
FN - Frassino nero

Struttura disponibile
BI - Bianco lucido
BO - Bianco opaco
BR - Verniciato bronzo
CH - Champagne
GF - Verniciato grafite
NO - Nero opaco
NS - Nero semilucido
OR - Verniciato oro
PG - Grigio perla




Informazioni tecniche




Le misure riportate sono in
millimetri e inches.

Informazioni

 Peso netto 27 kg/ 59.4 lb
Peso lordo 29 kg/ 63.8 lb

Imballaggio

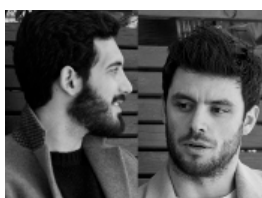
 Dimensioni
57 X 85 x 77 cm
22½ x 33½ x 30¼ inches

Tipo Cartone

 Volume 0.373 m³

Design

STUDIO NOVE.3



Luca Giacomelli e Lorenzo Rossotti, nati nel 1993, si sono laureati in Product Design presso l'Istituto Europeo di Design di Milano nel 2015. Dal 2015 collaborano con studi di design a Milano lavorando anche nel campo del packaging. Nel 2018 hanno fondato il Design Studio Nove.3 a Milano, occupandosi di design del prodotto e consulenza progettuale. Nel frattempo, partecipano ad alcuni concorsi con lo studio, ricevendo premi internazionali da importanti aziende del settore dell'arredamento.